

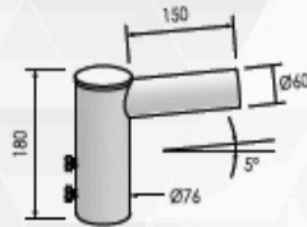


Pole Lights

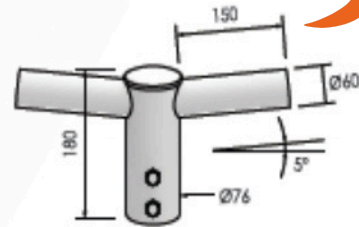
INNOVATIVE DESIGNS FOR
A POWERFUL FUTURE





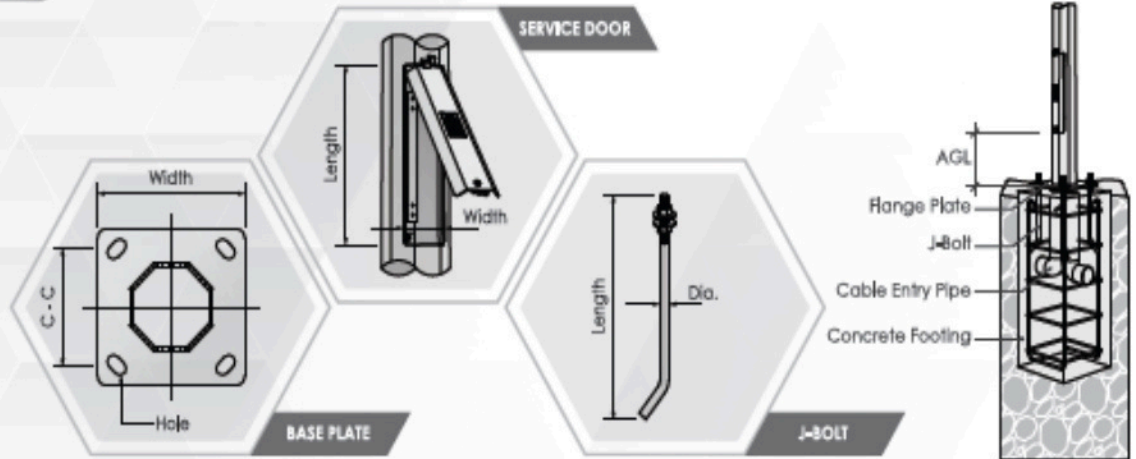


SINGLE SHORT ARM



DOUBLE SHORT ARM

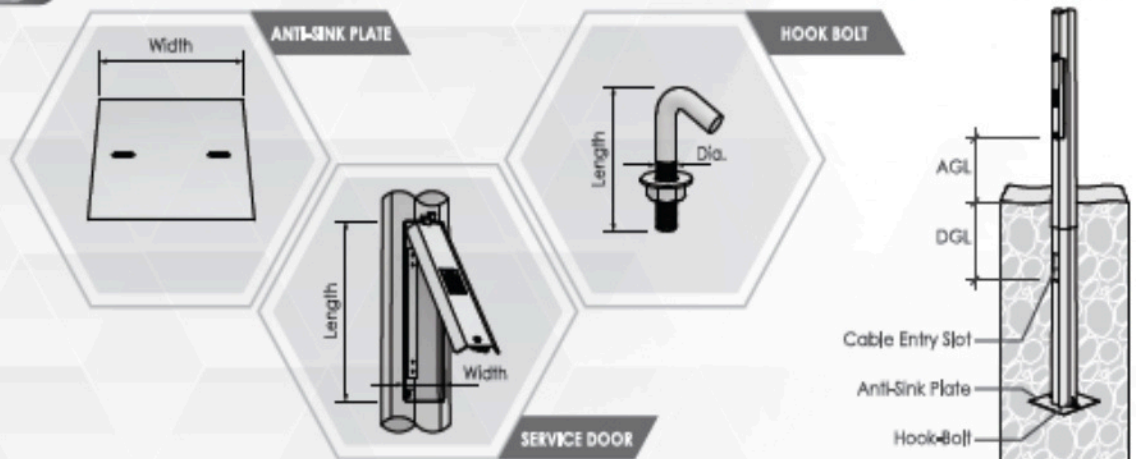
FLANGE MOUNTED TYPE



SECTION HEIGHT			BASE FLANGE PLATE				SERVICE DOOR			J-BOLT		CONCRETE FOOTING		
Pole(M)	Bottom	Top	Width	C - C	Hole	THK	AGL	Width	Length	Dia.	Length	Width	Height	C - C
4	4000	-	250	195	37 x 20	9	305	90	350	16	280	300	600	195
6	6000	-	300	220	45 x 26	12	305	100	450	20	450	350	900	220
8	8000	-	300	220	45 x 26	12	305	110	450	20	450	400	1000	220
9	2050	7200	300	220	45 x 26	15	610	120	450	20	450	400	1000	220
10	3050	7200	350	260	52 x 30	16	610	120	450	24	570	450	1100	260
12	5050	7200	400	300	56 x 30	18	610	120	450	24	570	500	1200	300

*All Dimension are in Millimeter (MM) unless stated

PLANTED TYPE



SECTION HEIGHT			ANTI-SINK PLATE			SERVICE DOOR			HOOK-BOLT		PLANTING DEPTH		
Pole(M)	Bottom	Top	Width	THK	AGL	Width	Length	Dia.	Length	Depth	DGL	Cable Entry	
4	4800	-	250	2.5	305	90	350	8	55	800	500	150 x 50	
6	7200	-	250	2.5	305	100	450	8	55	1200	500	150 x 60	
8	2450	7200	300	2.5	305	110	450	8	55	1300	500	150 x 60	
9	3450	7200	300	2.5	610	120	450	8	55	1400	500	150 x 60	
10	4550	7200	300	2.5	610	120	450	8	55	1500	500	150 x 60	
12	6750	7200	300	2.5	610	120	450	8	55	1700	500	150 x 60	

*All Dimension are in Millimeter (MM) unless stated

le with curve arm is
ue to its extended
ressway.

DARD

G POLE

by Mestron[®]

CATION

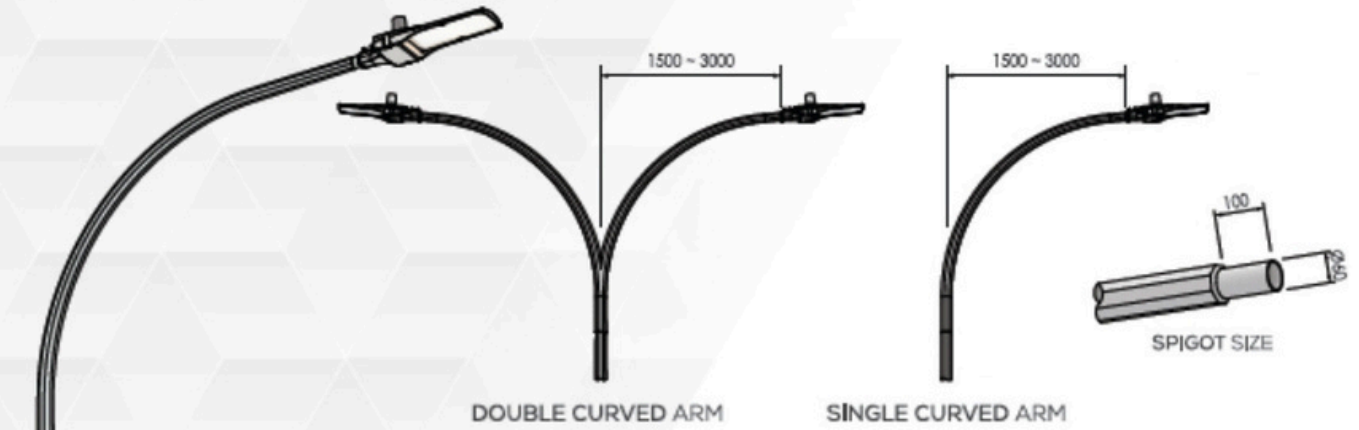
5 : 2002 "LIGHTING COLUMNS,
LUMNS"

ANALYSED USING STAAD. PRO V8I
THSTAND: 35 M/S WIND-SPEED,
CTOR OF 1.0

T "DESIGN AND VERIFICATION",
-3-2 : 2013

OMPLY TO BS EN 10025 S275 JR
H MINIMUM YIELD AND TENSILE
ESPECTIVELY

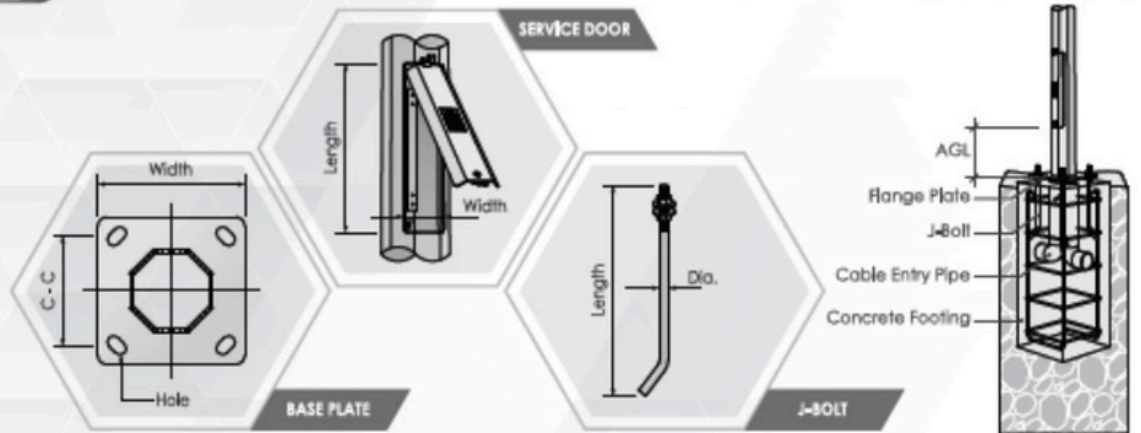
IN COMPLIANCE TO WELDING
1011-2 : 2001



DOUBLE CURVED ARM

SINGLE CURVED ARM

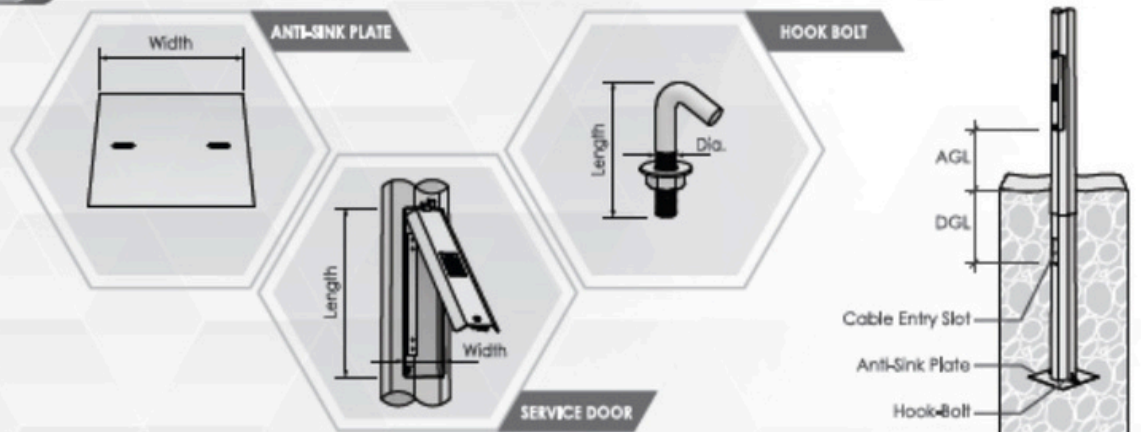
FLANGE MOUNTED TYPE



Pole(M)	SECTION HEIGHT			BASE FLANGE PLATE				SERVICE DOOR			J-BOLT		CONCRETE FOOTING		
	Bottom	Int.	Top	Width	C - C	Hole	THK	AGL	Width	Length	Dia.	Length	Width	Height	C - C
6	4350	-	1800	300	220	45 x 26	12	305	100	450	20	450	350	900	220
8	6350	-	1800	300	220	45 x 26	12	305	110	450	20	450	400	1000	220
9	2050	5600	1800	300	220	45 x 26	15	610	120	450	20	450	400	1000	220
10	3050	5600	1800	350	260	52 x 30	16	610	120	450	24	570	450	1100	260
12	5050	5600	1800	400	300	56 x 30	18	610	120	450	24	570	500	1200	300

*All Dimension are in Millimeter (MM) unless stated

PLANTED TYPE



Pole(M)	SECTION HEIGHT			ANTI-SINK PLATE		SERVICE DOOR			HOOK-BOLT		PLANTING DEPTH		
	Bottom	Int.	Top	Width	THK	AGL	Width	Length	Dia.	Length	Depth	DGL	Cable Entry
6	5600	-	1800	250	2.5	305	100	450	8	55	1200	500	150 x 60
8	2450	5600	1800	300	2.5	305	110	450	8	55	1300	500	150 x 60
9	3450	5600	1800	300	2.5	610	120	450	8	55	1400	500	150 x 60
10	4550	5600	1800	300	2.5	610	120	450	8	55	1500	500	150 x 60
12	6750	5600	1800	350	2.5	610	120	450	8	55	1700	500	150 x 60

*All Dimension are in Millimeter (MM) unless stated

OCTAGONAL STREET LIGHTING POLES WITH LONG ARM BRACKET

Illustration of some standard octagonal poles with long arm bracket for Street Lighting applications, complying with specifications. However, specifications can be catered as per the requirements of clients.

I. Pole Size (mm)

"H"	"h"	"d1"	"d2"	"Thk"
6,000	5,000	75	130	4
8,000	7,000	75	156	4
9,000	8,000	75	165	4
10,000	8,000	75	180	4
12,000	10,000	90	250	4
14,000	12,000	90	285	4

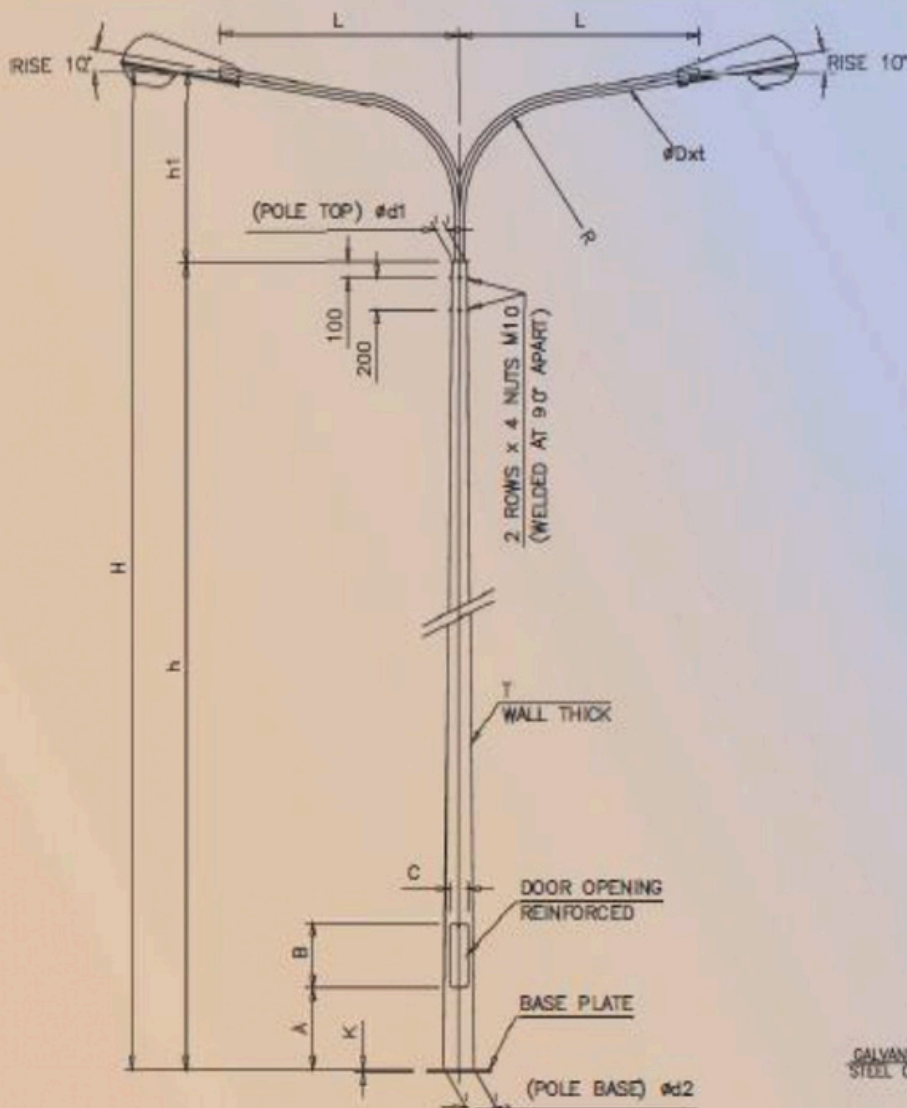
II. Arm Size (mm)

"h1"	"L"	"R"	"ØD x t"
1,000	1,000	700	60.3 x 2.90
1,000	1,500	700	60.3 x 2.90
1,000	1,500	700	60.3 x 2.90
2,000	2,000	1,000	60.3 x 3.65
2,000	2,500	1,500	60.3 x 3.65
2,000	2,500	1,500	60.3 x 3.65

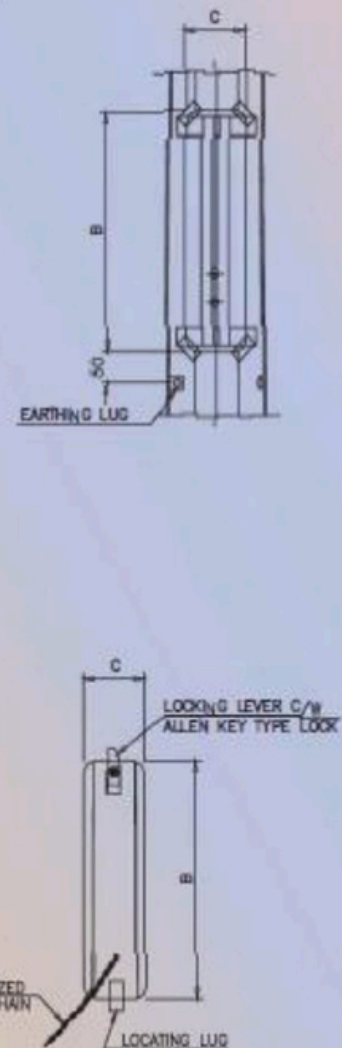
III. Door Opening (mm)

"A"	"B"	"C"
600	400	100
600	400	100
600	400	100
600	400	100
600	400	100
600	500	120
600	500	120

Pole + Bracket Details



Door Opening Details



OCTAGONAL STREET LIGHTING POLES WITH SHORT BRACKET

Illustration of some standard octagonal poles with short bracket for Street Lighting applications, com-plying with specifications. However, specifications can be catered as per the requirements of clients.

I. Pole Size (mm)

"H"	"d1"	"d2"	"T"	"Thk"
12,000	90	250	4	--
14,000	90	285	4	--
15,000	105	300	5	4
16,000	105	320	5	4
18,000	105	375	5	4

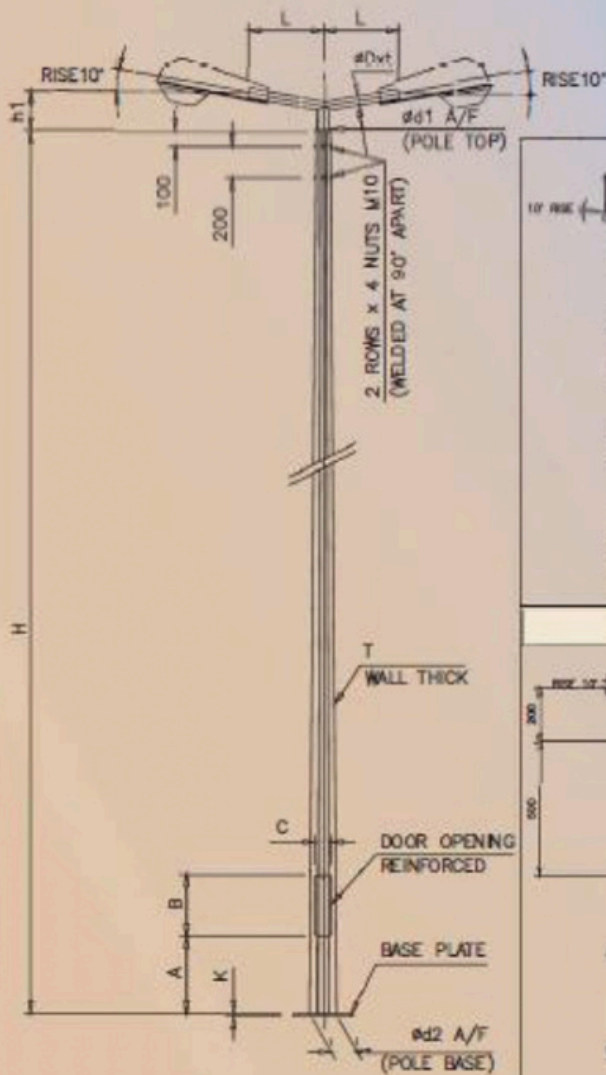
II. Arm Size (mm)

"h1"	"L"	"OD x t"
200	500	60.3 x 3.00
200	500	60.3 x 3.00
200	500	60.3 x 3.00
200	500	60.3 x 3.00
200	500	60.3 x 3.00

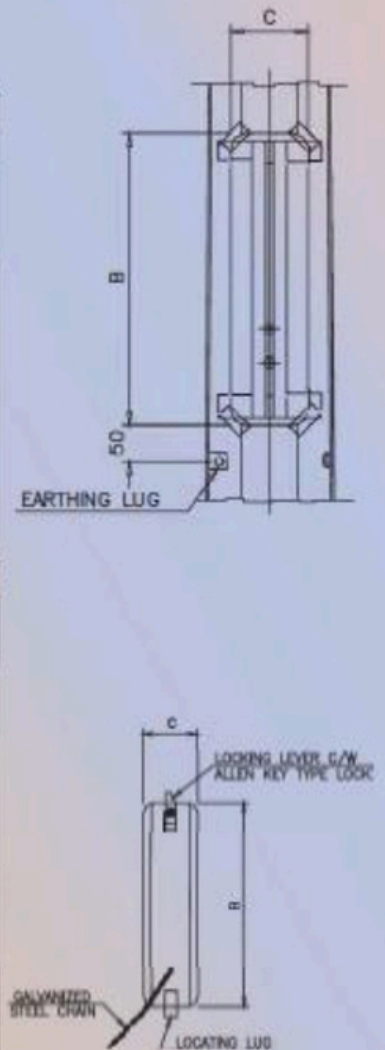
III. Door Opening (mm)

"A"	"B"	"C"
600	500	120
600	500	120
600	500	140
600	500	140
600	500	140

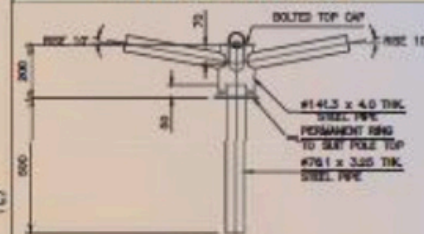
Pole + Bracket Details



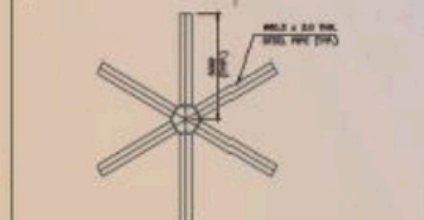
Door Opening Details



4-Way Bracket Details



6-Way Bracket Details



OCTAGONAL STREET LIGHTING POLES WITH SHORT ARM BRACKET

IV. Flange/Base Plate Size (mm)

"D"	"E"	"F"	"G"	"K"
400	300	32	45	20
400	300	32	50	25
450	350	35	50	25
450	350	35	50	30
500	400	38	50	35

V. Anchor Bolts Size (mm)

"OPxQ"	"R"	"M"	"Qty"
27x700	75	120	4 Nos
27x900	75	150	4 Nos
30x1000	75	150	4 Nos
30x1000	75	150	4 Nos
32x1000	75	150	4 Nos

Abbreviations/Notes

Abbreviations :

(i) Pole Size:

H = Shaft height
 d1 = Top dia.
 d2 = Bottom dia.
 Thk = Shaft Wall Thickness

(ii) Arm Size:

h1 = Bracket height,
 L = Outreach
 Dxt = Diameter x thickness

(iii) Door Opening :

A = Door opening ht above ground
 B = Door size
 C = Door width.

(iv) Flange/Base Plate :

D = Dimension
 E = Dist. between holes
 F = Hole width
 G = Hole length
 K = Plate Thickness.

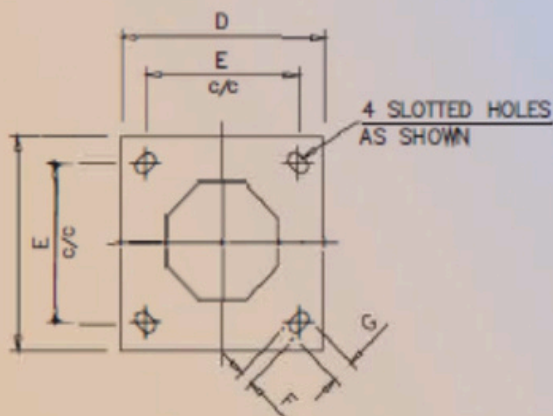
(v) Anchor Bolts :

P = Bolt dia
 Q = Bolt height
 R = Radius
 N = Bending height
 Q = No. of bolts required/Pole.

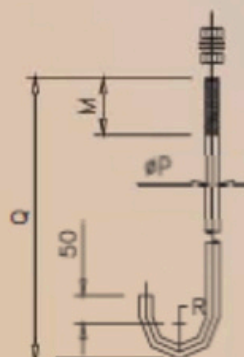
Notes:

- All dimensions are in mm
- Design compliance with BS EN 40:2000 Loads BS CP3, Chapter 5, Part-2
- Maximum wind speed 160 Km/hr.
- Finish : Hot dip galvanized to BS ISO 1461 (or as specified).
- Accessories are made of Mild Steel Grade.
- Shaft made of Steel Grade FE510C (According to EN 10025).

Flange Plate Details



Anchor Bolt Details



HIGH MAST POLE

FEATURES:-

1. High Grade – Mild Steel
2. Strong Base Plate
3. Hot Dip Galvanized
4. Higher Durability
5. Corrosion Free

Technical Data

Tech Detail	12 Mtr	12.5 Mtr	16 Mtr	20 Mtr	25 Mtr	30 Mtr	40 Mtr
BSEN10025 S355							
Material Construction							
Thickness	3, 3 mm	3, 3 mm	3, 4 mm	3, 4 mm	3, 4, 4 mm	3, 4, 5 mm	4, 4, 5, 5, 6, 6 mm
Top & Bottom Dia	150/310 mm	150/360 mm	150/360 mm	150/410 mm	150/460 mm	150/500 mm	150/700 mm
Size of base plate	500 mm	540 mm	540 mm	610 mm	660 mm	700 mm	900 mm
Base plate thickness	16 mm	16 mm	20 mm	25 mm	25 mm	30 mm	40 mm
No. of foundation bolts	6 nos	6 nos	8 nos	8 nos	12 nos	12 nos	16 nos

Activate Wind!



HIGH MAST POLE & ACCESSORIES

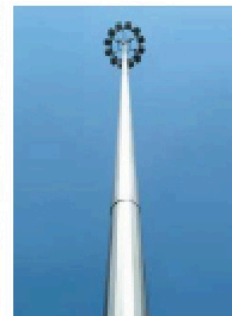


system achieves very large space to height ratios.

High-mast lighting is ideal for industrial or commercial areas, docks, airports, flyovers, stations, car parks and even some hazardous areas. All of these require the best possible lighting with minimum interference from the installation itself combined with ease of maintenance.

Jetcotech high mast is provided with accessories as per customer requirements. Generally, these include a raising and lowering system, trailing cable, power tool, feeder pillar for automatic switching operation of luminaries, lighting finial, and aviation obstruction warning light.

Code	Height	Bottom	Top	Sheet Thickness			Base Plate-PCD	Foundation Bolts			Luminary Capacity
				T	M	B		Dia	Length	Qty.	
JEHM1201	12	360	150		3		520x20-445	M24*700X6			4, 6, 8
JEHM1202	12	360	105		3		520x20-445	M24*700X6			4, 6, 8
JEHM1203	12	310	105	3		3	445x20-380	M24*700X6			4, 6, 8
JEHM1204	12	360	150	3		3	520x20-445	M24*700X6			4, 6, 8
JEHM1205	12	360	105	3		3	520x20-445	M24*700X6			4, 6, 8
JEHM1251	12.5	360	150	3		3	520x25-445	M24*700X6			4, 6, 8
JEHM1252	12.5	360	105	3		3	520x25-445	M24*700X6			4, 6, 8
JEHM1601	16	360	150	3		3	520x25-445	M30*850X8			4, 6, 8, 10
JEHM1602	16	410	150	3		3	630x25-530	M30*850X8			4, 6, 8, 10
JEHM1603	16	410	150	3		4	630x25-530	M30*850X8			4, 6, 8, 11
JEHM1604	16	460	150	3		4	670x25-580	M30*850X8			4, 6, 8, 10
JEHM2001	20	410	150	3		4	630x30-580	M30*850X8			6, 8, 10, 12
JEHM2002	20	460	150	3		3	670x30-580	M30*850X8			6, 8, 10, 12
JEHM2003	20	460	150	3		4	670x30-580	M30*850X8			6, 8, 10, 12
JEHM2501	25	460	150	3	4	5	670x30-580	M30*1000X12			6, 8, 10, 12
JEHM2502	25	540	150	3	4	5	730x30-650	M30*1000X12			6, 8, 10, 12
JEHM2503	25	540	150	4	4	5	730x30-650	M30*1000X12			6, 8, 10, 12
JEHM3001	30	540	150	3	4	5	750x30-650	M30*1000X12			8, 10, 12, 16
JEHM3002	30	540	150	4	4	5	750x30-650	M30*1000X12			8, 10, 12, 16
JEHM3003	30	610	200	3	4	5	840x30-740	M30*1000X12			8, 10, 12, 16, 20
JEHM3004	30	610	200	4	4	5	840x30-740	M30*1000X12			8, 10, 12, 16, 20, 24
JEHM3005	30	610	200	4	5	6	840x30-740	M30*1000X12			8, 10, 12, 16, 20, 24
JEHM4001	40	740	200	4	5-6	8	950x40-850	M30*1000X16			10, 12, 16, 20, 24



HIGH MAST

We at Jetcotech offer Flag Mast Pole under mast pole range. A Flag Mast from Jetcotech is engineered and manufactured by dedicated design team to fulfill customer requirements, a dedicated technical team for R & D as well as maintaining high quality of products. We are a reliable organization engaged in manufacturing a qualitative range of poles. Flag Mast Pole Uses for National Flag, Holly Flag & Organization Flag.



Code	Height	Bottom A/F	Top	Sheet Thickness			Base Plate-PCD	Foundation Bolts		
				T	M	B		Dia	Length	Qty.
JEFM1801	18	460	150	3		4	670x30-580	M30*850X8		
JEFM2001	20	460	150	3		4	670x30-580	M30*850X8		
JEFM2501	25	540	150	3	4	5	730X30-650	M30*1000X12		
JEFM3001	30	540	200	3	4	5	750X30-650	M30*1000X12		
JEFM3501	35	610	150	3	4-5	6	850X30-750	M30*1000X16		
JEFM4001	40	740	200	4	5-6	8	950x40-850	M30*1000X16		

FLAG MAST POLE & ACCESSORIES



JEFM3001	30	540	200	3	4	5	750X30-650	M30*1000X12		
JEFM3501	35	610	150	3	4-5	6	850X30-750	M30*1000X16		
JEFM4001	40	740	200	4	5-6	8	950x40-850	M30*1000X16		

STADIUM MAST POLE & ACCESSORIES

We at Jetcotech manufacture and supply Mast Pole for Stadium Lighting. We supply stadium mast with ladder and platform arrangements or R&L trolley system for maintenance purpose. We offer stadium mast with customized specification as per client's requirements. "our motto is lighting your sport and bright future"

Code	Height	Bottom A/F	Top	Sheet Thickness			Base Plate-PCD	Foundation Bolts			Luminary Capacity
				T	M	B		Dia	Length	Qty.	
JESM1501	15	460	150	3	3	3	670X25-580	M30*850X8			12, 24
JESM1601	16	460	150	3	3	4	670X25-580	M30*850X8			12, 24
JESM2001	20	460	150	3	4	4	670X30-580	M30*850X8			12, 24
JESM2501	25	540	150	3	4-4	5	750X30-650	M30*1000X12			12, 24, 48
JESM2502	25	610	200	4	4-5	6	830X30-730	M30*1000X12			24, 48
JESM3001	30	540	150	4	4-5	6	820X30-680	M30*1000X12			24, 48
JESM3002	30	610	200	4	5-6	6	830X40-730	M30*1000X16			24, 48

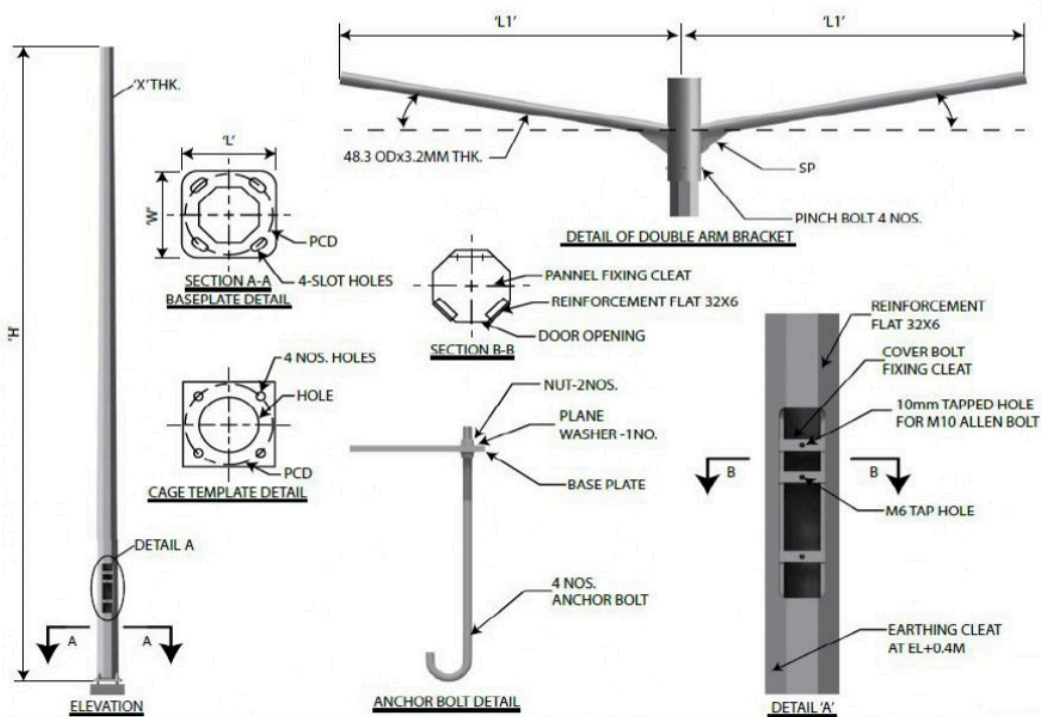


Note : Above all sizes are standard, Tailor-made sizes can be manufactured



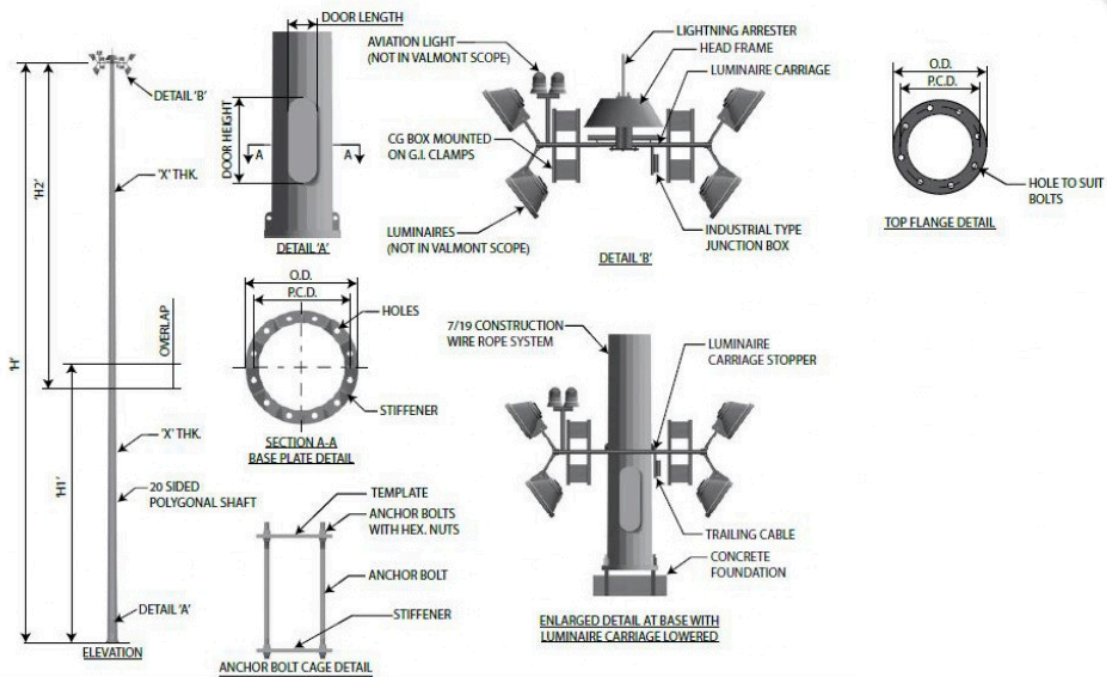
Activate V
Go to Setting

CUSTOMISED ENGINEERING





SUPERIOR SOLUTIONS FOR CHALLENGING ENVIRONMENTS





IN-HOUSE CUSTOM-DESIGN INGENUITY

